

W5. Numerical Prediction

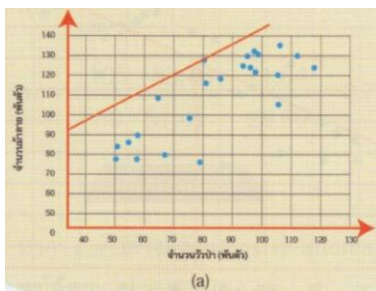
1. What is numerical prediction? Why can it be only done by using historical data?

2. What is a trendline?

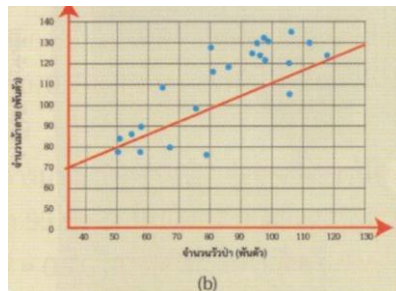
3. What are the three steps of predicting the data?

4. What is a “Best fit line”?

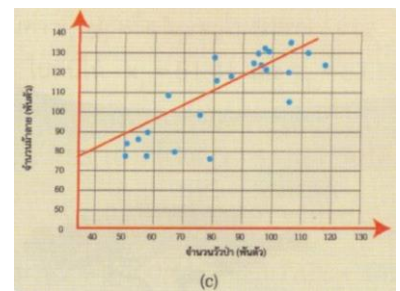
5. Which one of these is the “Best fit line”?



a)



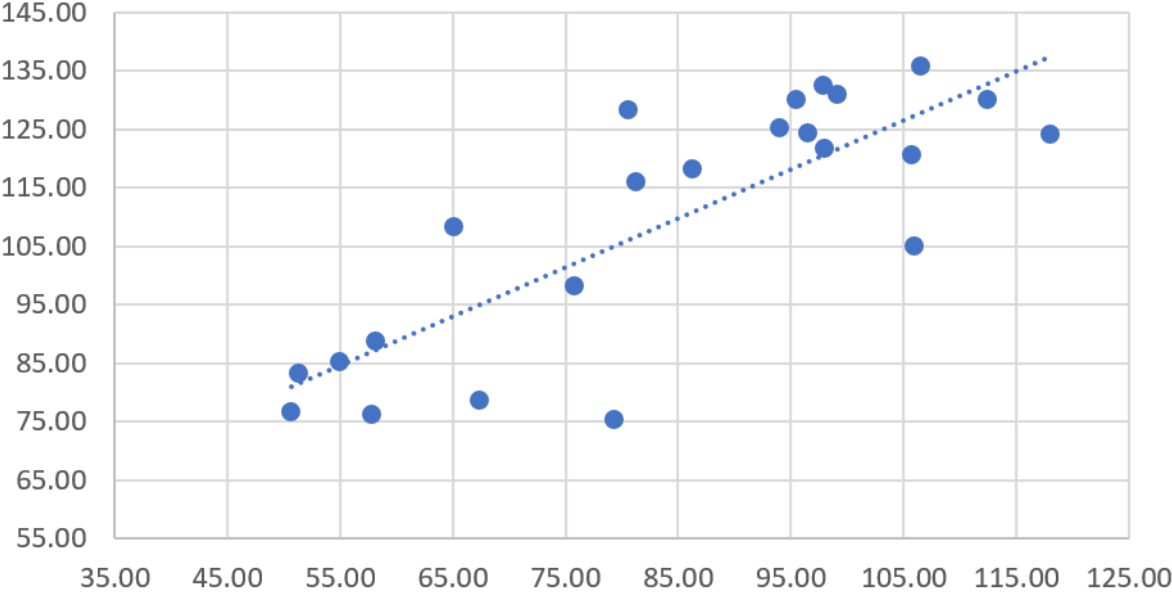
b)



c)

6. In [Task 1 \(bit.ly/DatasetRel\)](https://bit.ly/DatasetRel), predict the value of Y where X = 85. What is the difference?

a) Predicting from trendline



Y = _____

b) Using the equation $Y = mx + C$

Y = _____